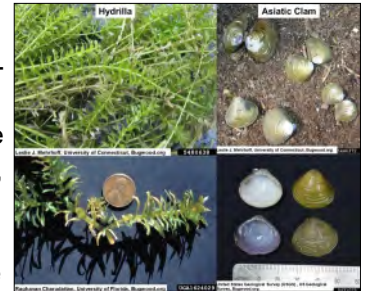


Saving Water from Invasive Species



Invasive species are a major problem in our area, both on the land and in our lakes, rivers and streams. The New Jersey Department of Environmental Protection (NJDEP) defines invasive species as “organisms that are not native to a particular ecosystem but can reproduce quickly and outcompete native species once established.” Invasive species can be plants, animals, fungi, algae, or pathogens. They negatively affect the health and natural balance of our environment and can cost millions of dollars to control. To learn more about invasive species, visit NJDEP’s Invasive Species website (dep.nj.gov/invasive-species/additional-resources/).



Unfortunately, invasive species are finding homes in our local waterways. Two examples are the Asian Clam (*Corbicula fluminea*) and an aquatic plant called Hydrilla (*Hydrilla verticillata*). Not only do these invasives impact native aquatic plants and animals, but they are also known to cause problems in drinking water supplies because they grow so aggressively and are difficult to control.

Many aquatic invasive species are spread by hitchhiking on boats, trailers, and gear used for water recreation. You can play a big role in stopping these hitchhikers by carefully cleaning and inspecting equipment before it is moved from one waterbody to another. If you use live bait, purchase it from a local source near the area where you fish. Dispose of bait and trash properly and never dispose of aquarium pets and plants in local waterways. If you see an invasive species, report it to the Invasive Species Strike Team (www.fohvos.info/invasive-species-strike-team/info-center/). To learn more about stopping aquatic hitchhikers, visit Stop Aquatic Hitchhikers!™ at stopaquatichitchhikers.org.

STOP AQUATIC HITCHHIKERS!

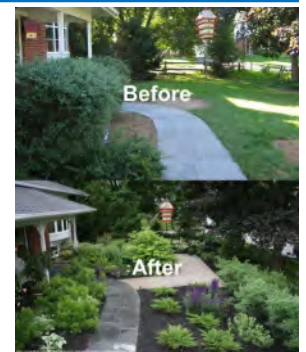


Be a Good Steward. Clean. Drain. Dry.
Stop the Transport of Invasive Species:

- Clean boats, boots, gear, trailer & vehicles and pets of plants, fish, animals and mud.
- Drain bilge, ballast, wells & buckets before you leave the area.
- Dry equipment before launching watercraft into another water body.



The hottest months of the year are here. Brick Utilities urges its customers to conserve water wherever possible and to be aware of unusually dry or drought conditions. Visit drought.gov or the New Jersey Drought Information website at dep.nj.gov/drought to learn about conditions in your area. Please follow all restrictions that are set by local and state authorities so there is enough water for everyone, especially emergency fire services. It’s okay to cut back on watering the yard and taking sprinkler breaks. Replace areas of turf with native plants which require less water and maintenance yet contribute beauty to the landscape and provide habitat for pollinators and birds. Check out Jersey-Friendly Yards (www.jerseyyards.org) to learn more about landscaping for a healthy yard and environment.



2023 WaterSense Accomplishments

WaterSense partners helped consumers save

WaterSense has helped reduce the amount of energy needed to pump, treat, and heat water by **997 billion kilowatt hours.**

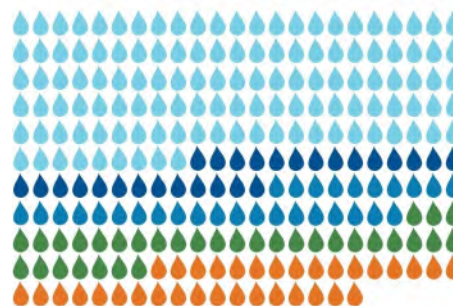
WaterSense partners and you helped save **8.7 trillion gallons of water.**



\$207 billion in water and energy bills.



That’s enough to supply a year’s worth of power to more than **92 million homes!**



That’s the water used in nearly **11 months** by all U.S. households!



1.2 trillion gallons saved in 2023



WaterSense partners and you helped eliminate nearly **379 million metric tons** of greenhouse gas emissions. The equivalent of planting **6.3 billion trees** and removing **90 cars from the road for a year!**

